
Continuity of Operations (COOP)

What's Your Plan?

Why Develop a COOP Plan?



Staffing



Assets



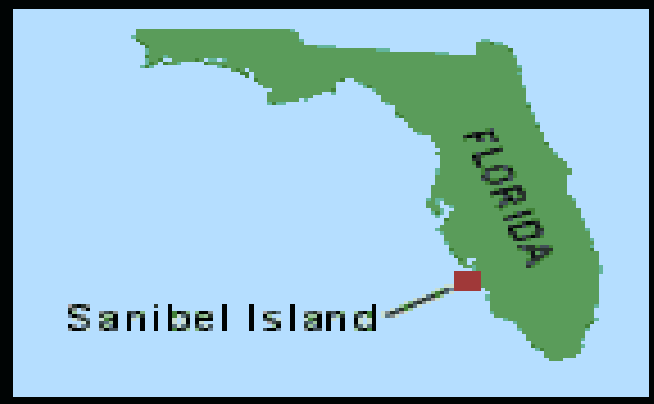
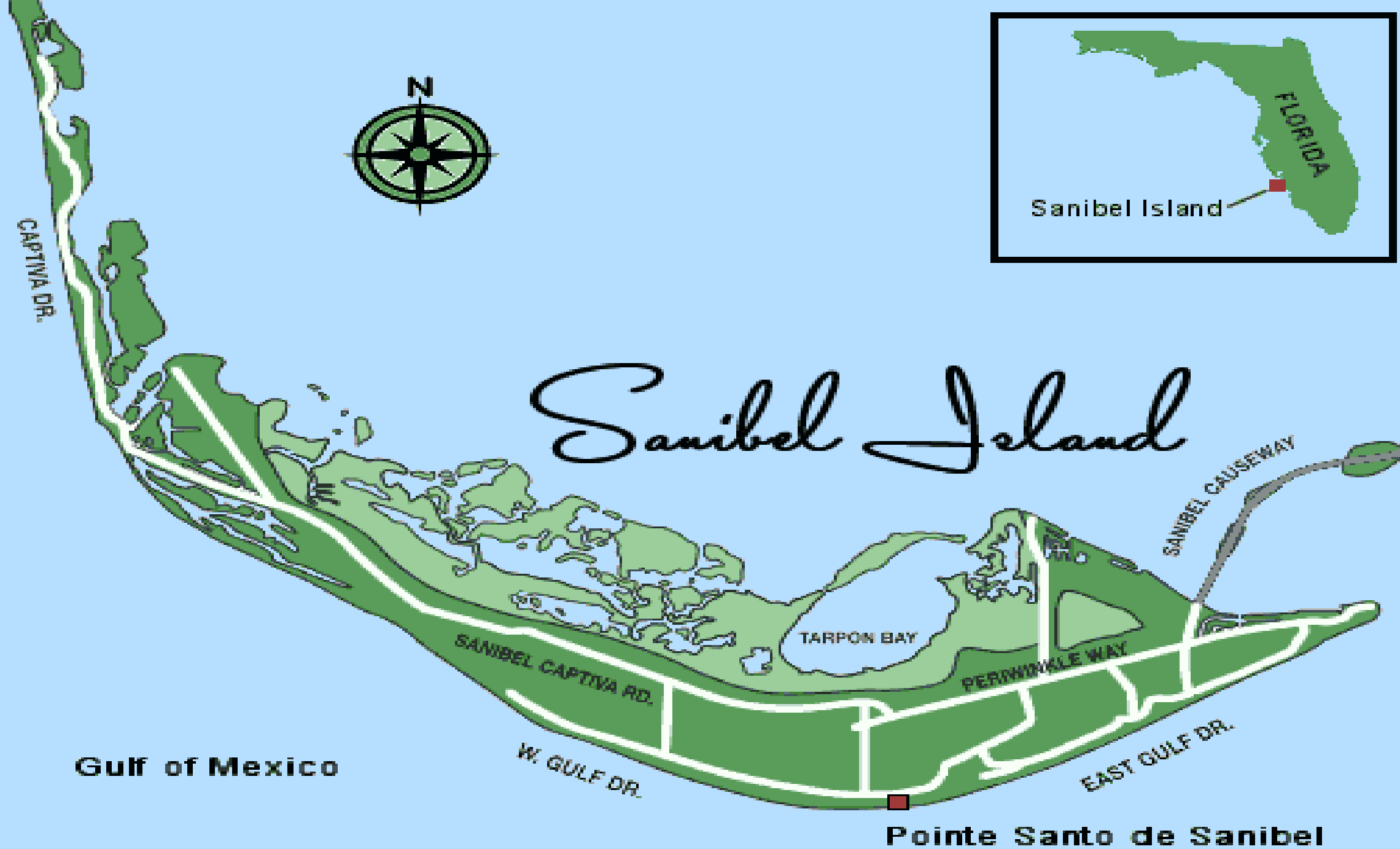
***IT
Systems***



***Vital
Records***

Benefit: Understand your organization's essential and non-essential services, functions, and dependencies

Goal: Ensure that critical services, organizational functions, and programs remain operational or are restored as soon as necessary during and following adverse events



Sanibel Island

Gulf of Mexico

Pointe Santo de Sanibel

CAPTIVA DR.

SANIBEL CAPTIVA RD.

W. GULF DR.

TARPON BAY

PERWINKLE WAY

EAST GULF DR.

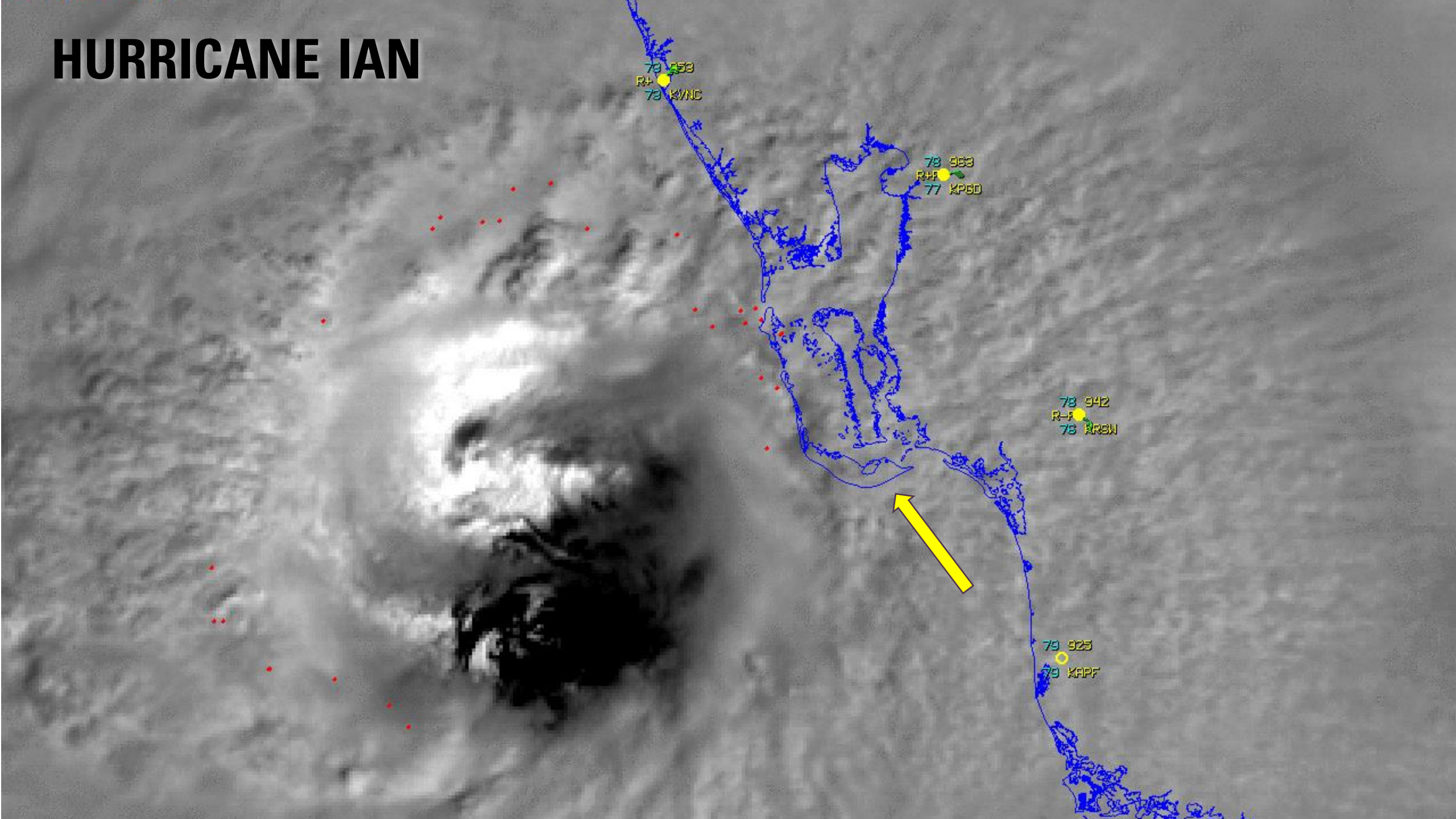
SANIBEL CAUSEWAY



Sanibel Island

FLORIDA

HURRICANE IAN



Continuity of Operations (COOP)

What's Your Plan?

Putting Your Plan Into Action!

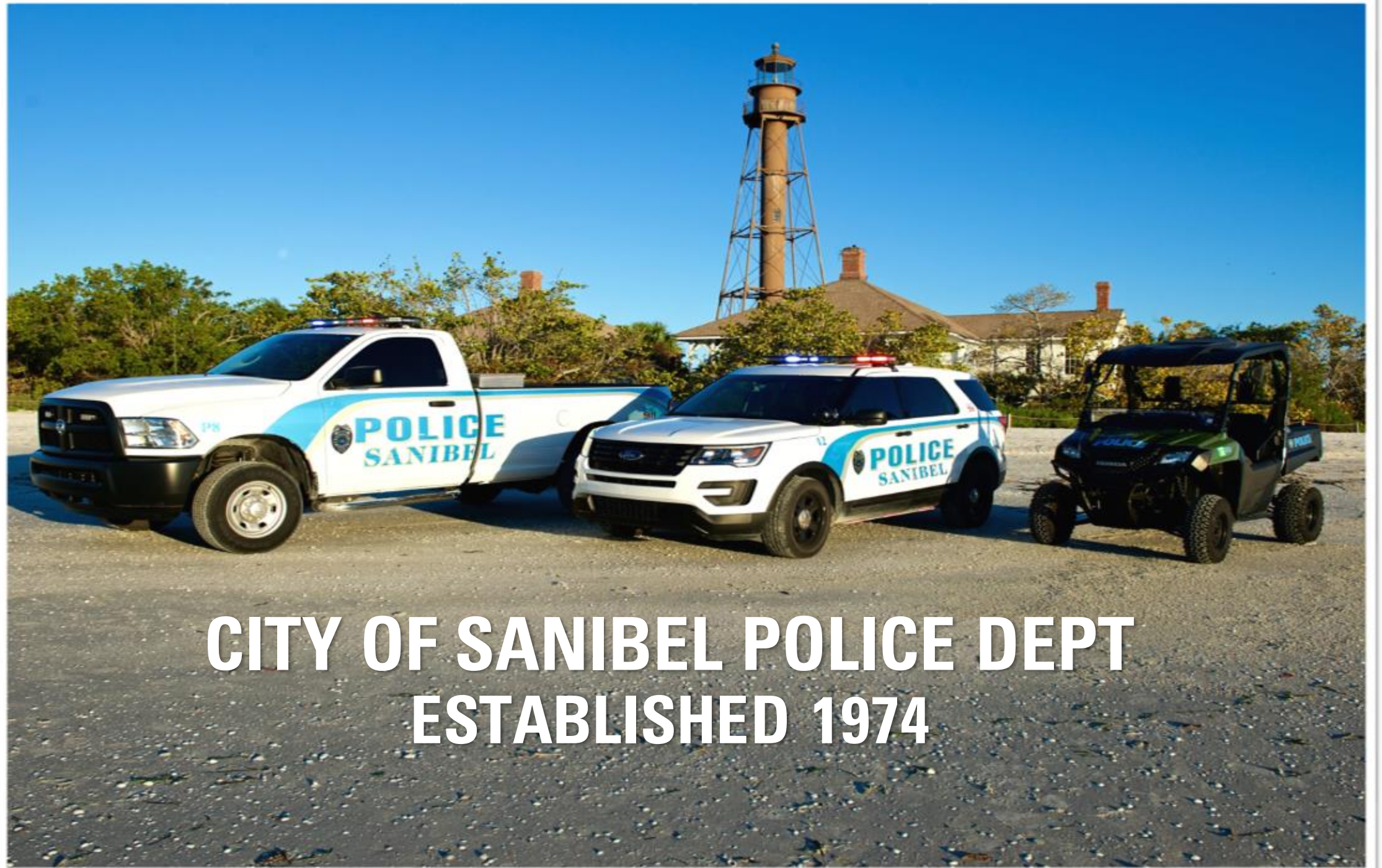
Presenter:

Chief William Dalton, City of Sanibel

Moderator:

Tony Scott, Synergy Companies





**CITY OF SANIBEL POLICE DEPT
ESTABLISHED 1974**



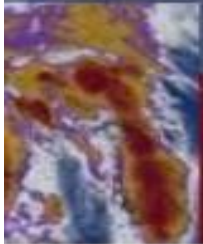


SANIBEL CAUSEWAY PRE-IAN



SANIBEL CAUSEWAY 09-28-2022

STORM SURGE OF 13+ FEET



TRACKING | IAN

FLOODING IN SANIBEL ISLAND

12:52
73°

TRACKING IAN

PEOPLE WITHOUT POWER



POWER OUTAGES



STATE OF FLORIDA: 272,000



100-140 MPH WINDS

SANIBEL CAUSEWAY

- Destroyed in multiple locations
- Completely cut off Sanibel island from motor vehicle traffic
- Repairs initially predicted to take many months



SANIBEL HISTORIC LIGHTHOUSE

- 138 year-old structure lost one of its legs
- Storm surge removed houses, which have not been found.
- Beach severely eroded and vegetation decimated



REMNANTS OF HOUSES AT BASE OF LIGHTHOUSE



INITIAL RESPONSE

- Mobilized personnel & vehicles via boats & barges
- Search & rescue and recovery operations performed
- First responder physical and mental health oversight



COMMUNICATIONS & OPERATIONS CENTER

- Lee County emergency operations center
- Temporary dispatch & communications
- Overall command and control of initial response





NATIONAL GUARD DELIVERING FOOD

TEMPORARY PORTS & BARGING

- Makeshift ports built so barges could unload
- Allowed public safety & utility vehicles to access island
- Critical “outside the box” thinking in weeks after the event





POWER TRUCKS OFFLOADING FROM BARGE

SANIBEL CAUSEWAY OPENS!

- 3 weeks post-storm, essential vehicular traffic begins
- Dramatically increases ability to recover the island
- Increases morale of responders & citizens



SUCCESSFUL RESPONSE & RECOVERY IS ABOUT PEOPLE...

ID essential functions

Include succession plans

List external support options





TAKEAWAYS

Communications
between Police and
City Leadership

Communications
between Police and
External Resources



THANK YOU! QUESTIONS?

William Dalton | Police Chief | City of Sanibel