



Coastal Partnership Initiative Grant Opportunities August 2021

Holly Edmond, Grant Administrator

Holly.Edmond@FloridaDEP.gov or 850-245-2181

Florida Coastal Management Program





Coastal Partnership Initiative

- **The Coastal Partnership Initiative (CPI) is administered by the Florida Coastal Management Program, in the Office of Resilience and Coastal Protection, of the Florida Department of Environmental Protection**
- **Funding provided through a partnership with the National Oceanographic and Atmospheric Administration, Coastal Zone Management Program**





Coastal Partnership Initiative

- **The Coastal Partnership Initiative was developed to promote the protection and effective management of Florida's coastal resources in four specific priority areas:**
 - **Resilient Communities**
 - **Coastal Resource Stewardship**
 - **Public Access to Coastal Resources**
 - **Working Waterfronts**





Who is Eligible?

- **Florida's 35 coastal counties and municipalities within their boundaries that are required to include a coastal element in their comprehensive plan. An entity (a local government or other eligible applicant) may submit one application per funding cycle.**
- **Florida's public colleges, universities, regional planning councils, national estuary programs and nonprofit groups may also apply provided that an eligible local government agrees to participate as a partner and signs the application.**





CPI Awards

- **Financial awards are limited to no more than \$60,000 for construction projects, habitat restoration, invasive exotic plant removal or land acquisition, and no more than \$30,000 for planning, design and coordination activities. The minimum award is \$10,000 and requires 100% (1:1) cash or in-kind match from the recipient.**
- **Funding Cycle**
 - **The funding year typically begins July 1 and ends June 30 the following year. Projects are to be completed within 12 months. Awards for this cycle would begin July 1, 2022.**





CPI Application Process

- **Application Window and Deadline**
 - A Notice of Funds Availability will be published in the Florida Administrative Register in mid-August to open the application period. Applications must be received by 4:00 p.m. EDT on October 15, 2021).
- **Application Review**
 - Eligible CPI applications are reviewed and ranked by a committee of coastal resource experts, using the criteria listed in the application. The highest ranked projects will be considered for funding as available. All information required for application evaluation must be submitted in the CPI grant application.





CPI Application Form

- **Application Form**
 - An application form must be completed by the applicant.
 - Construction and restoration projects also require a completed 306A Questionnaire.
 - The application form and 306A Questionnaire can be downloaded from the Grants webpage: <https://floridadep.gov/rcp/fcmp/content/grants>
 - The application form and 306A Questionnaire can also be provided via email upon request.





Federal Environmental Compliance under the National Environmental Protection Act

- **Required for construction and soil disturbing projects, including restoration and invasive species management/removal**
- **Applicants must complete 306A Questionnaire**
- **Permits do not need to be in place prior to application, but applicant must conduct preliminary consultation with regulatory authorities**
 - **Project timeline must include adequate time for permitting**
- **Additional review by NOAA for NEPA compliance**





CPI Priority Areas

Resilient Communities



Vulnerability analyses and risk assessments; coastal wetland restoration; improving community resiliency to coastal hazards

Public Access to Coastal Resources



Small-scale capital improvements like walkovers, boardwalks, and facilities; land acquisition and management planning

Coastal Resource Stewardship



Coastal clean-ups; environmental awareness initiatives; resource restoration; invasive species management

Working Waterfronts



Small-scale construction projects that renew or promote interest in waterfront districts; developing vision plans





CPI Projects

- Coastal Miami Restoration
 - City of Miami
 - \$30,000 (project total: \$60,048)
- CPI funds were used for removal of invasive species and native species revegetation on Virginia Key, a 1,000-acre barrier island in Biscayne Bay. The city purchased supplies and equipment for the project that will also be used for long-term park and trail maintenance. The project included design and installation of educational and wayfinding signage along nature trails.

RESTORING THE ECOLOGICAL SYSTEM OF VIRGINIA KEY DUNE

BEACH DUNE is a predominantly herbaceous community made up of a wide variety of coastal specialist plants. The upper beach is regularly disturbed by waves of high tides or storms and regularly recolonized by drift line annuals and trailing perennials such as railroad vine (*Ipomoea pes-caprae*). Above the reach of wave action is the foredune, built by coarse, rhizomatous grasses, primarily sea oats (*Uniola paniculata*), that thrive under constant burial from sand blown off the beach. Beyond the zone of constant sand burial, are the dwarfed trees and shrubs of the coastal strand. The species growing in this zone are kept at a low stature by salt.

VIRGINIA KEY BEACH NORTH POINT PARK Mabel Fentress Miller Walking Trail

SEA OAT
Uniola paniculata

SILVER SEA-OXLEY-DAISY
Bonchia rotundifolia

FAITHFUL BEAUTY BUTTERFLY
Composita fidelium

BAY CEDAR
Lumnitzera maritima

BEACH HIBBERDY
Scaevola plumieri

LOGGERHEAD SEATURTLE
Caretta caretta

RUBBERVINE
Echitis umbellatus

SEA LAVENDER
Tournefortia gnaphalodes

BEACH PEANUT / *Okenia hypogaea*

This is an endangered native plant species. It is attractive to birds, bees, and butterflies. It is not related to the peanut family; instead it receives its name because its seed develops deep in the soil, similar to peanuts.

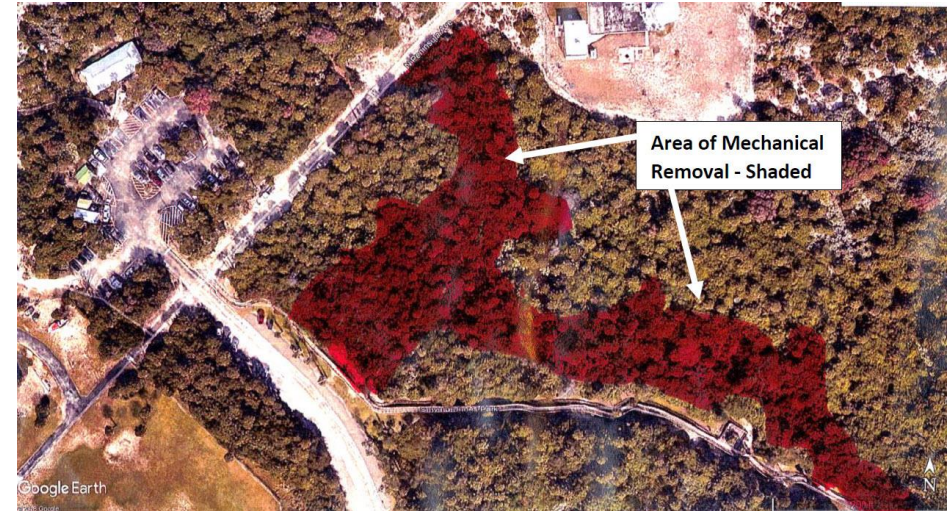
If you are interested in volunteer opportunities e-mail us at parks@miamigov.com





CPI Projects

- **Smyrna Dunes Park – Brazilian Pepper**
 - Volusia County
 - \$14,800 (project total: \$29,600)
- Volusia County used CPI funds to hire a contractor for the removal of invasive Brazilian pepper using both chemical and mechanical removal methods. Signage was also installed in high visibility areas throughout the park to inform visitors of the project. Volunteers were also involved in two field removal days and received a project overview and safety training as part of the event.





CPI Projects

- **Reconstruction of Treasure Island's Ring Billed Gull Parking Lot**
 - City of Treasure Island
 - \$30,000 (project total: \$60,000)
- The Ring Billed Gull Parking lot is one of two primary beach access spots for Sunset Beach. This project replaced the existing lot with a pervious pavement lot, added additional parking spaces, and installed an environmentally friendly irrigation system and rain garden with educational signage. The success of this project inspired the City of Treasure Island to incorporate pervious pavement projects in other areas.

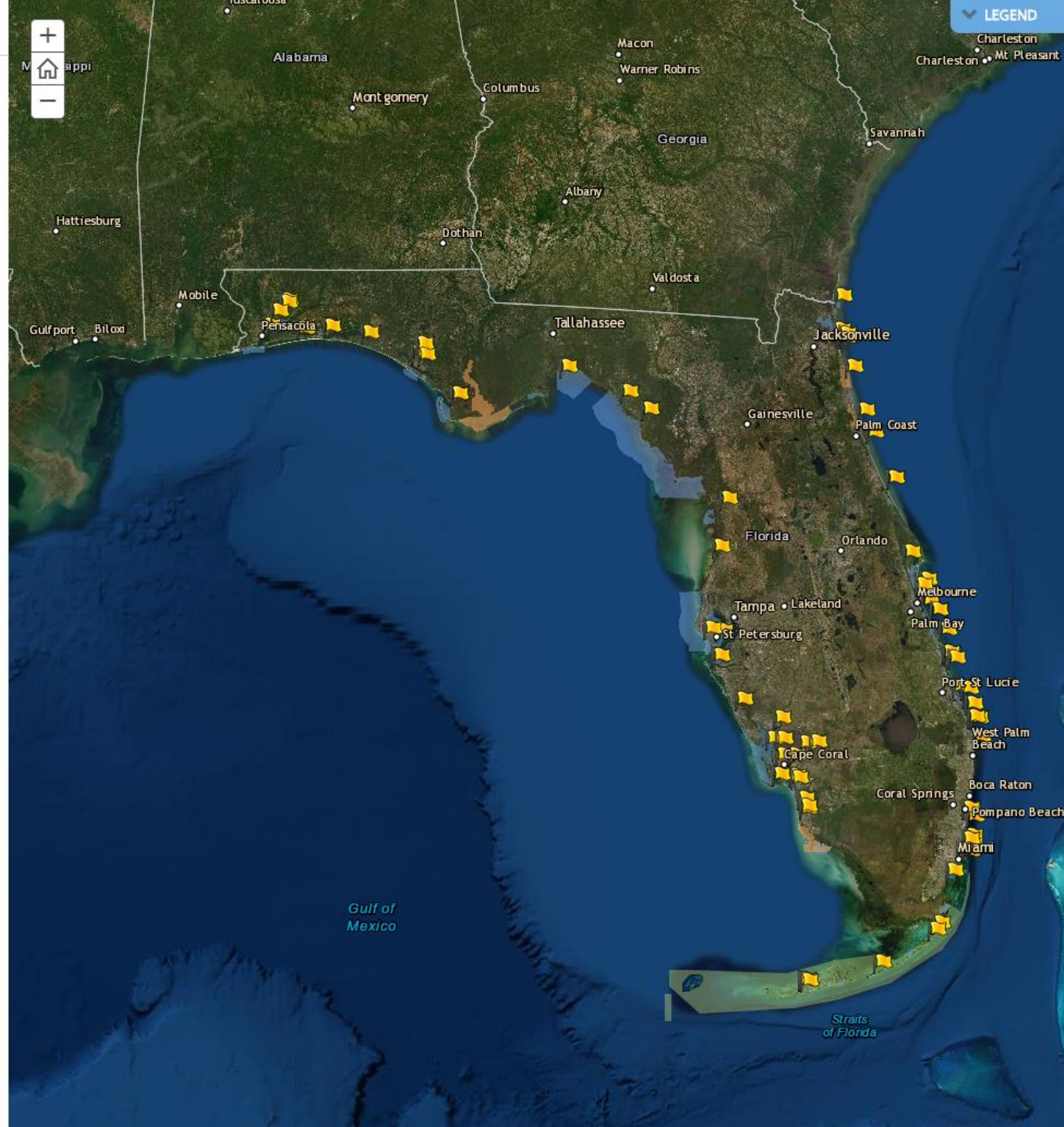




Florida's Coastal Partnership Initiative

The Florida Coastal Management Program is based on a network of agencies implementing 24 statutes that protect and enhance the state's natural, cultural and economic coastal resources. The goal of the program is to coordinate local, state and federal agency activities using existing laws to ensure that Florida's coast is as valuable to future generations as it is today. Florida's Department of Environmental Protection is responsible for directing the implementation of the state-wide coastal management program. Each year, the FCMP publishes a CPI Brochure and a "Notice of Availability of Funds" in the *Florida Administrative Register* to solicit CPI applications from eligible entities. CPI grants provide support for innovative local coastal management projects in four program areas:

- Resilient Communities
- Public Access
- Working Waterfronts
- Coastal Stewardship





Questions?

Information relating to the notice for availability of funds, grant applications and the Grant Rule 62S-4, FAC, and more, can be found on the Coastal Partnership Initiative webpage at:

<https://floridadep.gov/rcp/fcmp/content/coastal-partnership-initiative>

<https://floridadep.gov/rcp/fcmp/content/grants>





Thank you!

Holly Edmond, Grant Administrator

Holly.Edmond@FloridaDEP.gov

850-245-2181

Tiffany Herrin, Grant Manager/CPI Coordinator

Tiffany.Herrin@FloridaDEP.gov

850-245-2953