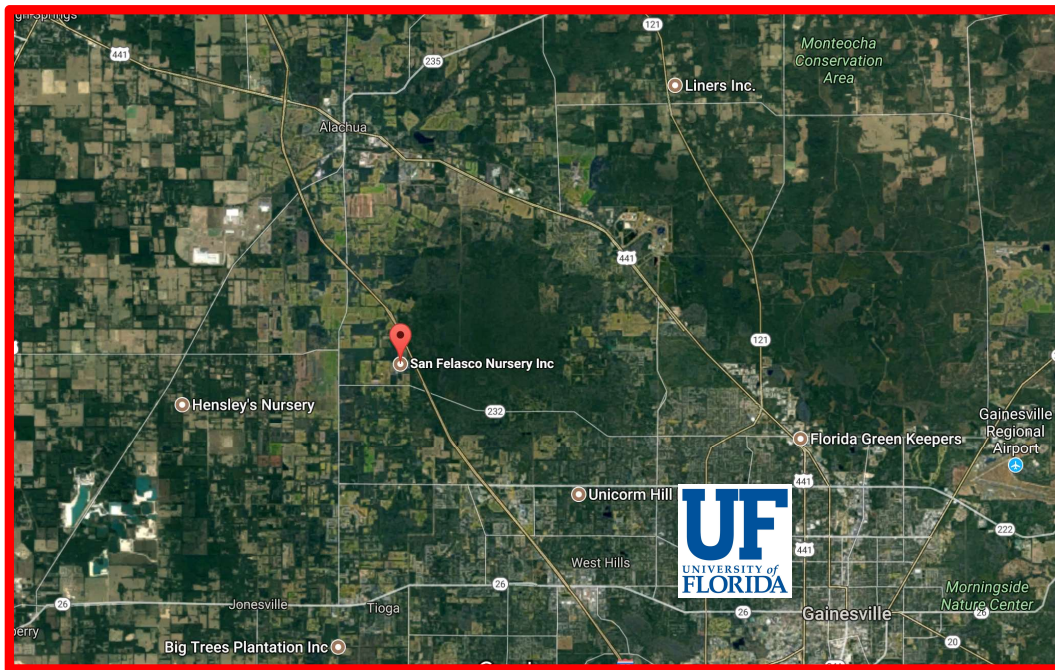




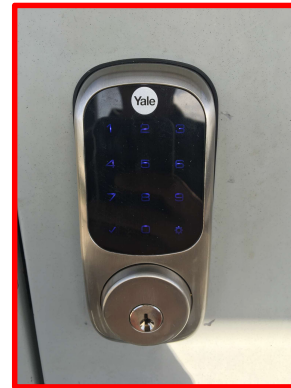
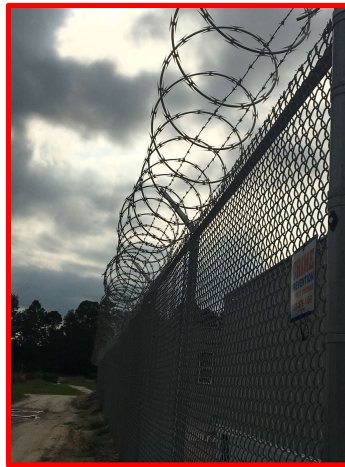
Medical Marijuana and Your City

Facts, Fiction and Moving Forward

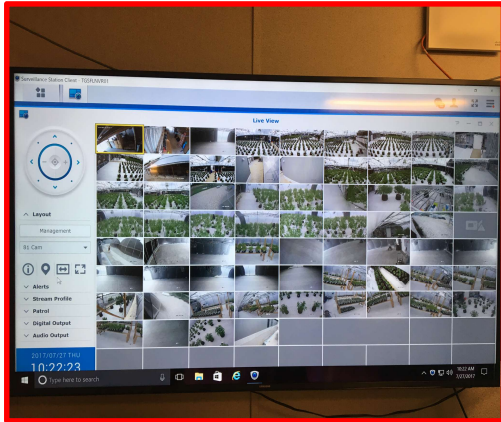
San Felasco Nursery



Security Systems



Security Systems



Cultivation



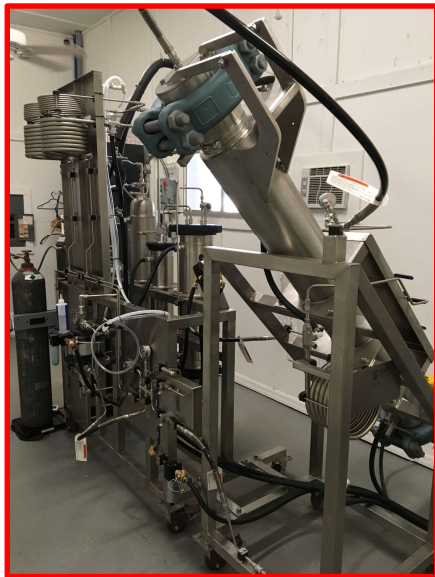
Cultivation



Cultivation

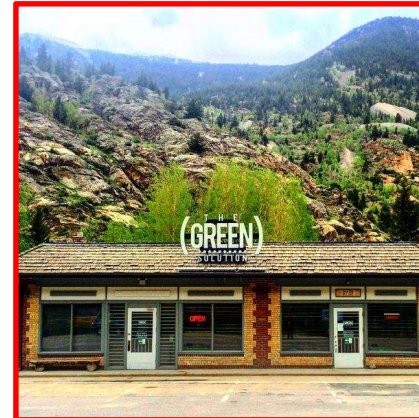


Manufacturing/Processing



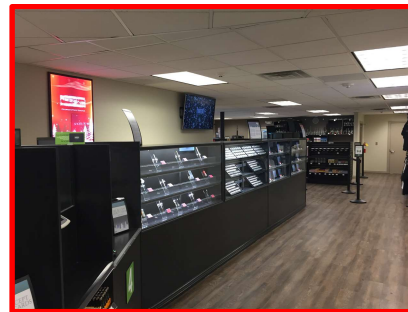


Retail Locations in Colorado



Presentation by Nikki Fried, Igniting Florida, LLC

Retail Location in Colorado





Contact Information

Nikki Fried, Esq.
Igniting Florida, LLC
nikki@ignitingflorida.com
www.ignitingflorida.com



Presentation by Nikki Fried, Igniting Florida, LLC







PLANTS CHOSEN
FOR GENETIC EXCELLENCE

ALL-NATURAL PEST CONTROLS

SURTERRA
THERAPEUTICS





ORGANIC SOIL



HARVESTED BY HAND



SEPARATE ESSENTIAL
CANNABINOIDS AND TERPENES

HIGH HIGH

Inlet Outlet

MBPR1
380 Bar Max.

SOUTH CAROLINA
USA

INLET

2

1

Waters



REFINE AND PURIFY

A close-up photograph of a glass filled with a vibrant red liquid. The glass is partially filled, and the liquid has a rich, deep red hue. A white, geometric wireframe structure, resembling a molecular or crystalline lattice, is overlaid on the glass and liquid. The background is dark and out of focus, with a white, curved object visible on the right side. The overall composition is artistic and scientific.

CRAFTED FOR SPECIFIC CONDITIONS

TEST RESULTS
PROVIDED TO PATIENTS



COMMITTED TO
THE HIGHEST QUALITY



FIND YOUR WELLNESS

EMPOWER YOUR HEALTH

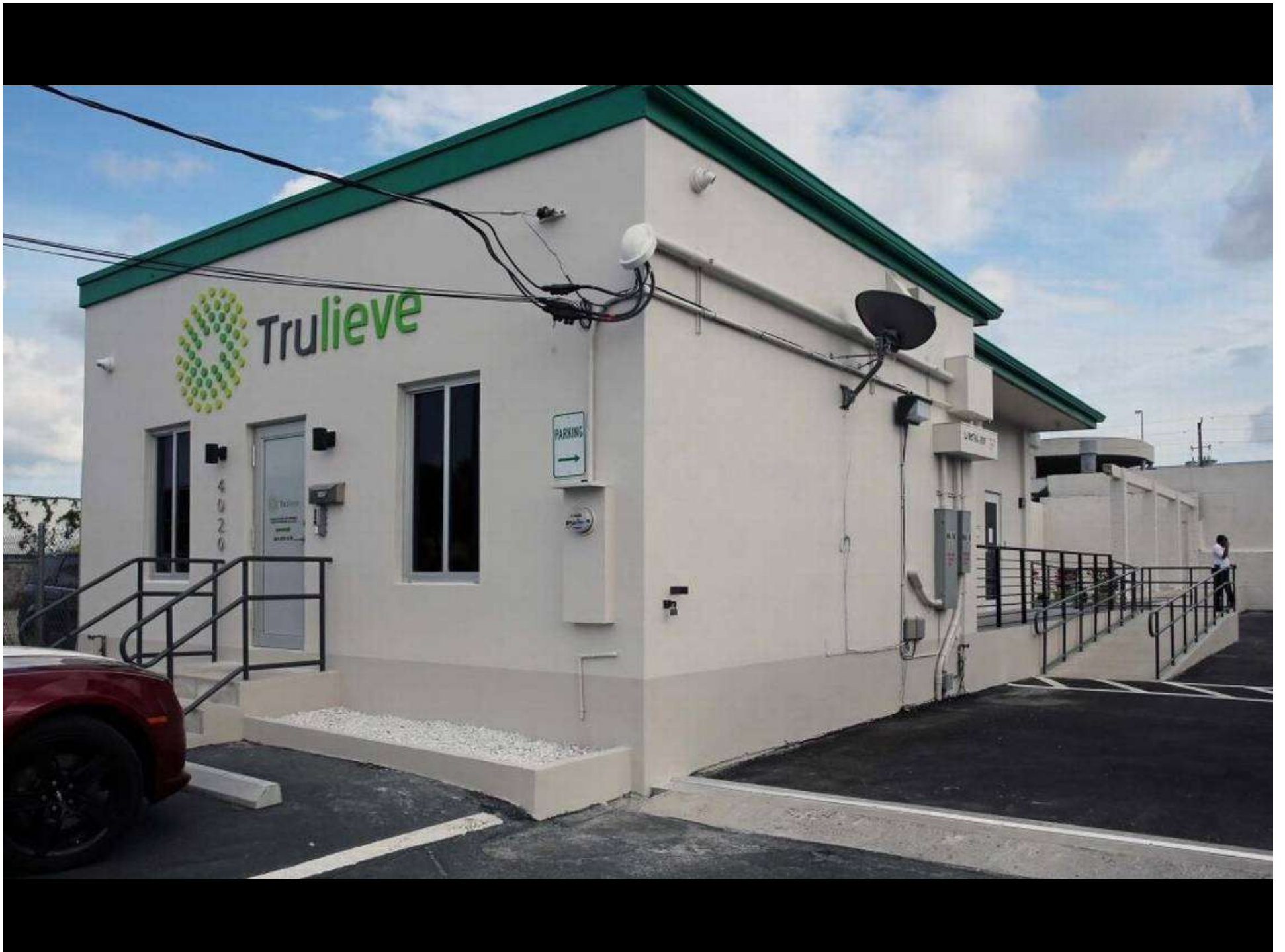








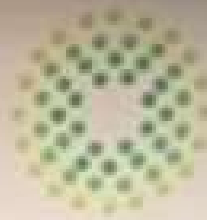












Trulieve



Trulieve

Dispensing Relief
...Naturally

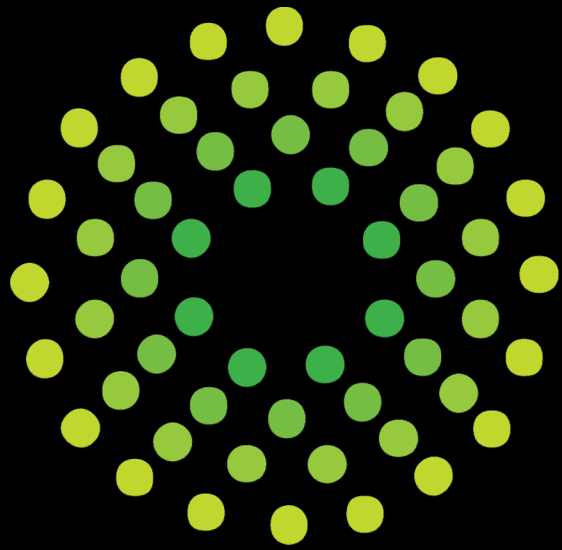
(844) TRULIEVE FOR
STATEWIDE DELIVERY

8435 4TH STREET NORTH
ST. PETERSBURG, FL 33702









Trulieve

A Medical Marijuana Treatment Center



MEDICAL MARIJUANA

LOCAL GOVERNMENT PERSPECTIVE

FLC Research Symposium
August 16, 2017
City of Fort Walton Beach

TIMELINE OF EVENTS

- **November 8, 2016 – Amendment 2 adopted by Florida voters (71% approval)**
 - **71.65% approval in Okaloosa County**
- **January 10, 2017 – City Council Workshop on Amendment 2**
- **March 2, 2017 – 1st Reading of Ordinance 1972 at LPA**
 - **Recommended unanimously to City Council for approval**
- **March 28, 2017 – Ordinance 1972 adopted by City Council**
 - **Unanimous approval**

ORDINANCE 1972 - DISPENSARIES

- Created Medical Marijuana Dispensary as a permitted use
 - Allowable in CG (Commercial), MX-1 (Mixed-Use Medium), & MX-2 (Mixed-Use High) Zoning Districts
- Supplemental Standards for Dispensaries
 - Not located within 500 feet of a school
 - Not located within 1,000 feet of another dispensary
 - Parking Requirements
 - Business Tax Receipt (1 per licensee)
 - Population Basis (1 dispensary per 10,000 residents)

CITY ZONING MAP

OFFICIAL ZONING MAP

Adopted by Ordinance 1861
March 27, 2012

City of Fort Walton Beach
Engineering Services Department



0 1,200 2,400 3,600 4,800 6,000 7,200
Feet

Scale 1" = 1200'



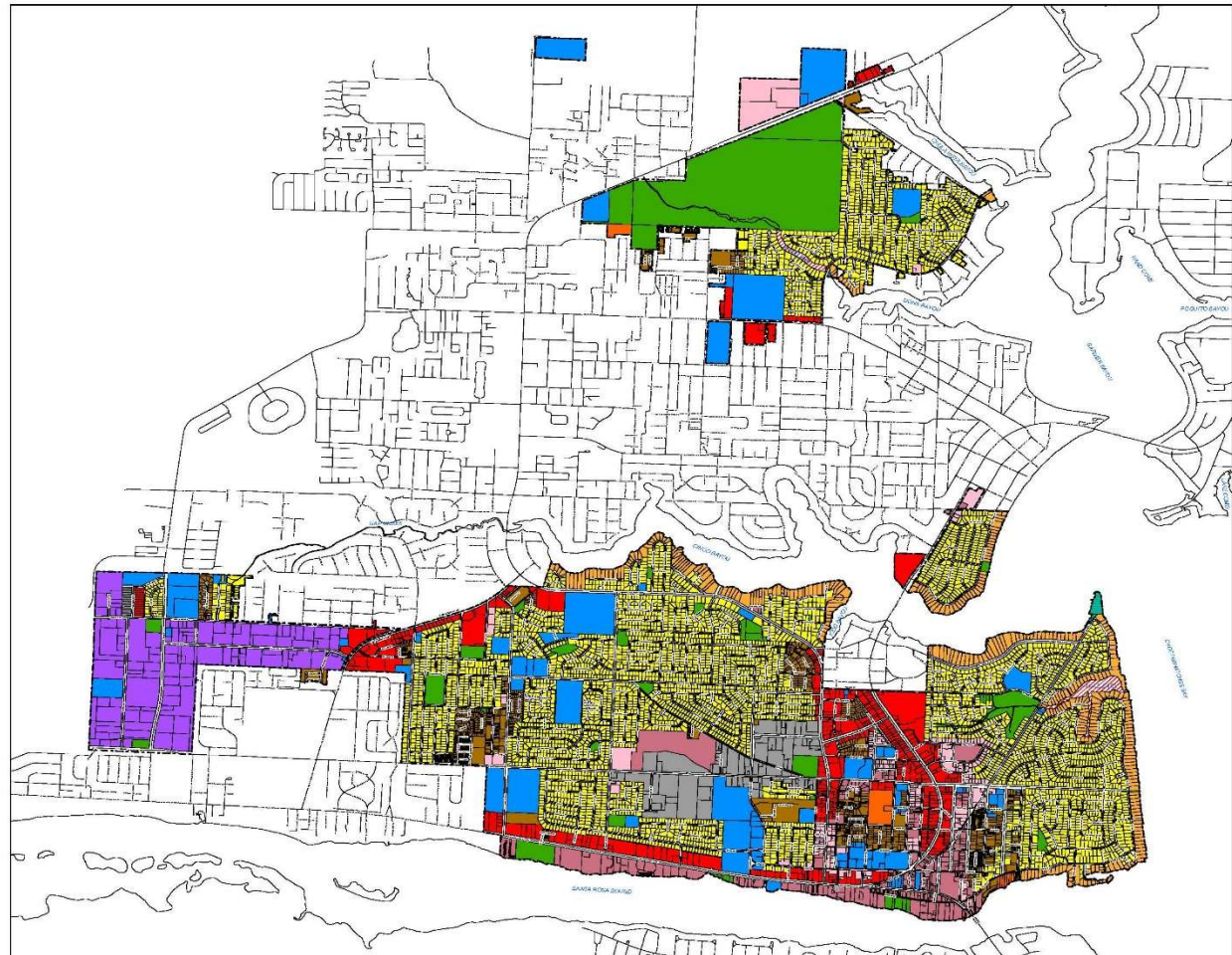
Map Prepared by the
City of Fort Walton Beach
GIS Division

Zoning Legend

- City Limits
- R-1 SINGLE FAMILY RESIDENTIAL
- R-1E SINGLE FAMILY RESIDENTIAL ESTATE
- R-2 MULTI-FAMILY RESIDENTIAL
- YC YACHT CLUB
- MX-1 MIXED-USE MEDIUM
- MX-2 MIXED-USE HIGH
- MB MIXED BUSINESS & MANUFACTURING
- CTP COMMERCE & TECHNOLOGY PARK
- CF COMMUNITY FACILITIES
- CG COMMERCIAL
- PUD PLANNED UNIT DEVELOPMENT
- REC RECREATION
- NZ NOT ZONED

REVISIONS

ORD.#	DATE	ORD.#	DATE	ORD.#	DATE
1878	8/13/2013				
1883	2/17/2014				
1906	10/26/2014				
1910	1/13/2015				
1915	2/24/2015				
1929	1/17/2016				
1932	1/17/2016				
1936	3/22/2016				
1953	11/15/2016				
1983	12/26/2016				



EFFECT OF SENATE BILL 8-A

- Dispensaries are to be treated the same as pharmacies
- Revised ordinance required (To City Council in September)
- LDC allows Drug Stores & Pharmacies in:
 - CG (Commercial)
 - MX-1 (Mixed-Use Medium)
 - MX-2 (Mixed-Use High)
 - ***MB (Mixed Business & Manufacturing)***
- Removal of Supplemental Standards for Dispensaries

THANK YOU!

QUESTIONS?

Cannabis Panel

FLORIDA LEAGUE OF CITIES



Cannabis Panel

FLORIDA LEAGUE OF CITIES



Cannabis Panel

FLORIDA LEAGUE OF CITIES



Cannabis Panel

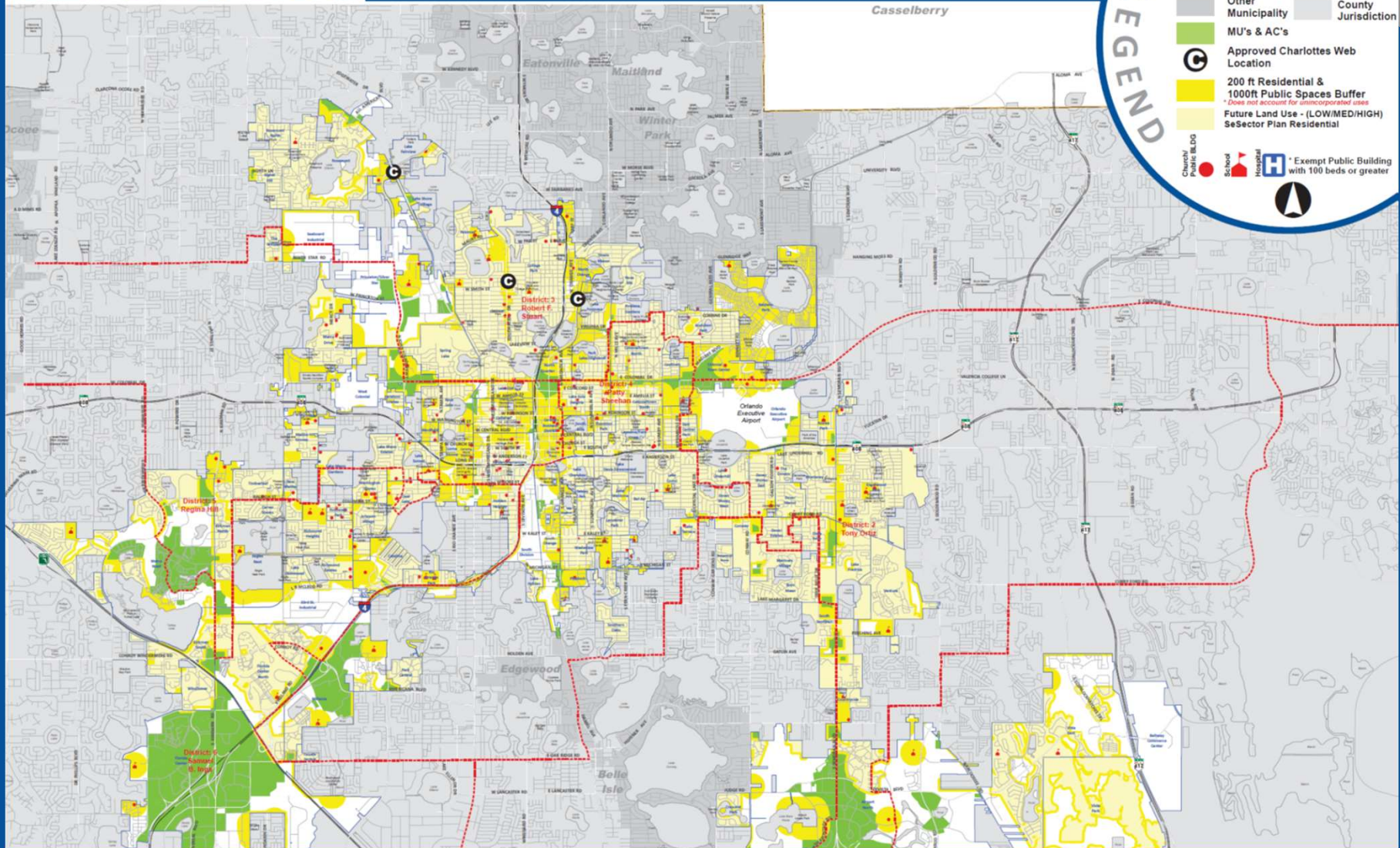
FLORIDA LEAGUE OF CITIES





CITY OF ORLANDO

Proposed Medical Marijuana Zones



LEGEND

- Commissioner District Boundary
- Orlando Neighborhood Boundary
- Other Municipality
- County Jurisdiction
- MU's & AC's
- Approved Charlottes Web Location
- 200 ft Residential & 1000ft Public Spaces Buffer
*Does not account for unincorporated areas
- Future Land Use - (LOW/MED/HIGH) SeSector Plan Residential
- Church/Public BLDG
- School
- Hospital
- Exempt Public Building with 100 beds or greater
-



CITY OF ORLANDO