



MEDICAL MARIJUANA

LOCAL GOVERNMENT PERSPECTIVE

FLC Research Symposium
August 16, 2017
City of Fort Walton Beach

TIMELINE OF EVENTS

- November 8, 2016 – Amendment 2 adopted by Florida voters (71% approval)
 - 71.65% approval in Okaloosa County
- January 10, 2017 – City Council Workshop on Amendment 2
- March 2, 2017 – 1st Reading of Ordinance 1972 at LPA
 - Recommended unanimously to City Council for approval
- March 28, 2017 – Ordinance 1972 adopted by City Council
 - Unanimous approval

ORDINANCE 1972 - DISPENSARIES

- Created Medical Marijuana Dispensary as a permitted use
 - Allowable in CG (Commercial), MX-1 (Mixed-Use Medium), & MX-2 (Mixed-Use High) Zoning Districts
- Supplemental Standards for Dispensaries
 - Not located within 500 feet of a school
 - Not located within 1,000 feet of another dispensary
 - Parking Requirements
 - Business Tax Receipt (1 per licensee)
 - Population Basis (1 dispensary per 10,000 residents)

CITY ZONING MAP

OFFICIAL ZONING MAP

Adopted by Ordinance 1861
March 27, 2012

City of Fort Walton Beach
Engineering Services Department



0 1,200 2,400 3,600 4,800 6,000 7,200
Feet

Scale 1" = 1200'



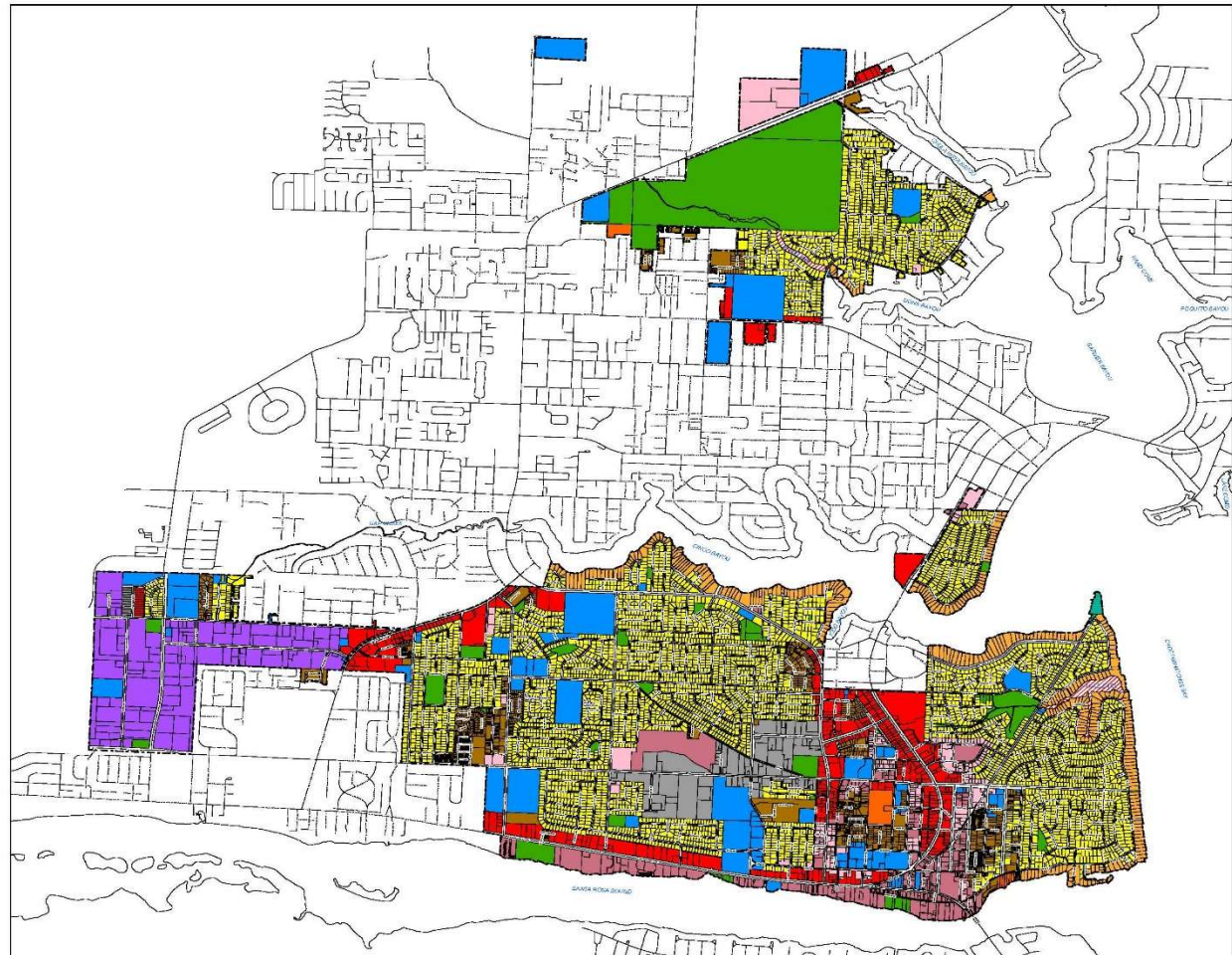
Map Prepared by the
City of Fort Walton Beach
GIS Division

Zoning Legend

- City Limits
- R-1 SINGLE FAMILY RESIDENTIAL
- R-1E SINGLE FAMILY RESIDENTIAL ESTATE
- R-2 MULTI-FAMILY RESIDENTIAL
- YC YACHT CLUB
- MX-1 MIXED-USE MEDIUM
- MX-2 MIXED-USE HIGH
- MB MIXED BUSINESS & MANUFACTURING
- CTP COMMERCE & TECHNOLOGY PARK
- CF COMMUNITY FACILITIES
- CG COMMERCIAL
- PUD PLANNED UNIT DEVELOPMENT
- REC RECREATION
- NZ NOT ZONED

REVISIONS

ORD.#	DATE	ORD.#	DATE	ORD.#	DATE
1878	8/13/2013				
1883	2/17/2014				
1908	10/26/2014				
1910	1/13/2015				
1915	2/24/2015				
1929	1/17/2018				
1932	1/17/2018				
1936	3/22/2018				
1953	11/15/2018				
1985	12/26/2019				



EFFECT OF SENATE BILL 8-A

- Dispensaries are to be treated the same as pharmacies
- Revised ordinance required (To City Council in September)
- LDC allows Drug Stores & Pharmacies in:
 - CG (Commercial)
 - MX-1 (Mixed-Use Medium)
 - MX-2 (Mixed-Use High)
 - ***MB (Mixed Business & Manufacturing)***
- Removal of Supplemental Standards for Dispensaries

THANK YOU!

QUESTIONS?